

HorseTackNZ Saddlery - Terms for Trial

The best way to know if you and your horse are suited to and are comfortable in any saddle is to try it out first. As we all know, it's a risk to just "buy off the shelf" and hope it works out. We do not send out Sensation Ride saddles unless a horse and its rider have been assessed first for suitability. This is to ensure that you and your horse will be comfortable and happy, and therefore enjoy a safer ride.

At HorseTackNZ we request photos of your horse from different angles to assess its shape and condition before sending out a saddle on trial. Just as important is rider information. This is to make sure that our combined time, effort and in your case, money is not duly wasted in the process. As the Sensation Ride treeless saddles are an unfamiliar concept for many, we send or email all relevant information, and your questions will be answered fully. We like to work in with, and encourage, people who are trialling these saddles so they really enjoy the experience.

If it all looks satisfactory and a trial of one of the saddles on the In-Stocks page is imminent, then you will be asked for your credit card details so a Trial Fee of \$100 and courier one-way costs can be charged. The total cost of the goods is then authorised to your card until returned. The box must go to an address or local Poste Haste agent where it can be signed for. The \$100 fee is deducted from the price of the saddle if you wish to go ahead and purchase it. Please email the details below to horsetack@actrix.co.nz

Horse Information:

HH:

Age:

Breed:

Height of Withers (Low, Medium or High):

Condition of Spine e.g. any prominence:

Condition of Back and Topline:

Rider Information:

Height:

Weight:

Inseam Pants Measurement:

Discipline(s) and intensity:

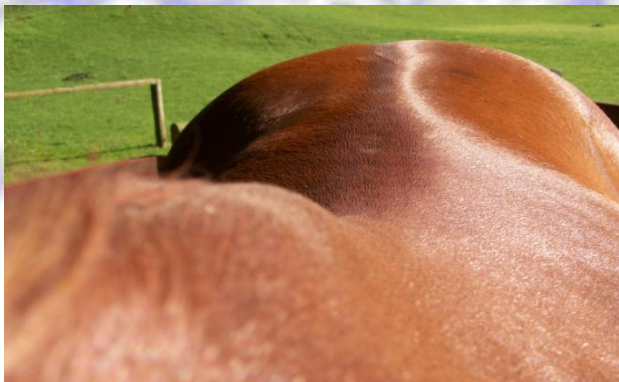
Phone:

Cell:

Home Address:

Courier Address:

Examples (next page) of photos required for an assessment - Horse needs to be standing square, on the level, and with head up. Please keep digital photo files to around 300kb.



If you don't own a treeless pad then a Remedy Half pad will be provided, plus a Dixie Midnight No-Sweat vent pad to keep everything clean. The Sensation saddles all require a Dressage girth the right size and one can also be sent on request. As a guideline to get the correct sizing of a Sensation Ride Self-Center Girth measure your horse's entire girth in inches, taking in the girth groove. Deduct 40" for a G4 Western Sport, 44" for a G3 English Trail, or 46" for a Dressage saddle e.g if you horse measures 70" then the girth size for a Dressage saddle will be 24".

The Fine Print: To cover ourselves, there must be a couple of rules agreed to by both parties before a trial. In the event of damage or loss of goods while on trial – the cost will be charged to trialler's credit card. To return, use NZ Courierpost or a reputable courier firm so goods are properly insured. If the gear is not clean, then a \$25 cleaning charge will apply. HorseTackNZ Saddlery upon discretion retains the right to charge the full price of the goods if they are not returned within 10 days of trialler's receipt of goods.

Suzanne Liddall



HorseTackNZ Home of TuffRock in NZ
Saddlery & Gallery www.horsetack.co.nz



Phone 09 437 5304 - horsetack@actrix.co.nz